

Heated Towel Rails

Jersey Square 4 BAR

Product Code

MS4 | MS4 BLACK | MS4 BSS
MS4 GM | MS4 BRASS

Dimensions (mm)

620(w) x 500(h) x 120(d)mm

Width Centres **590mm**

Vertical Centres **300mm**



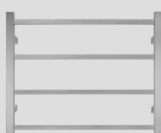
POLISHED
MS4

**Finishes: Beautiful and highly durable
palette of exquisite finishes**

(Polished Stainless/Black/Brushed Stainless/Brushed Gunmetal/Brushed Brass)



BLACK
MS4 BLACK



BRUSHED SS
MS4 BSS



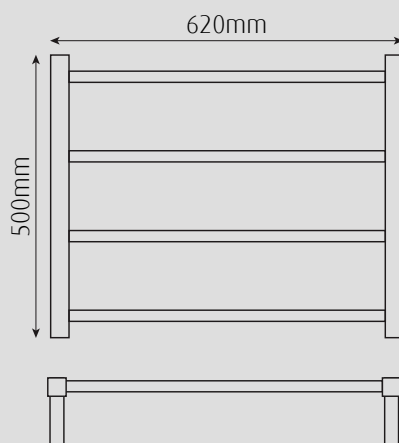
BRUSHED GUNMETAL
MS4 GM



BRUSHED BRASS
MS4 BRASS

Features

- 4 bars
- Dual wired-can connect from LH or RH bottom leg
- Concealed wiring kit included
- All fixing accessories included
- 40watts, 230-240 Volts, 50 Hz single phase
- Class 1 appliance - requires an earth connection
- Ingress Protection Rating - IP45 Splashproof



Notes : Wiring connection is either LH or RH bottom leg and can be a concealed or exposed connection. It should be positioned at least 600mm above the floor.

Heated Towel Rails

Jersey Square 7 BAR

Product Code

MS7 | MS7 BLACK | MS7 BSS
MS7 GM | MS7 BRASS

Dimensions (mm)

620(w) x 920(h) x 120(d)mm

Width Centres **590mm**

Vertical Centres **720mm**



POLISHED
MS7

Finishes: Beautiful and highly durable
palette of exquisite finishes

(Polished Stainless/Black/Brushed Stainless/Brushed Gunmetal/Brushed Brass)



BLACK
MS7 BLACK



BRUSHED SS
MS7 BSS



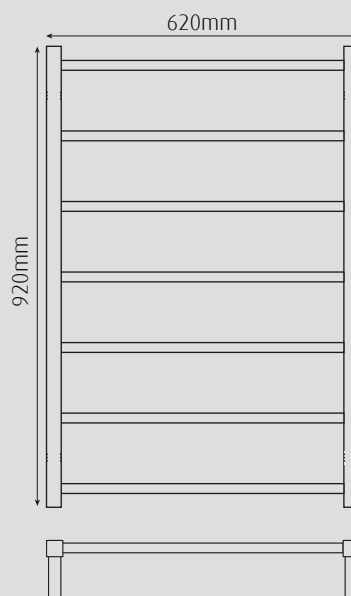
BRUSHED GUNMETAL
MS7 GM



BRUSHED BRASS
MS7 BRASS

Features

- 7 bars
- Dual wired-can connect from LH or RH bottom leg
- Concealed wiring kit included
- All fixing accessories included
- 80watts, 230-240 Volts, 50 Hz single phase
- Class 1 appliance - requires an earth connection
- Ingress Protection Rating - IP45 Splashproof



Notes : Wiring connection is either LH or RH bottom leg and can be a concealed or exposed connection. It should be positioned at least 600mm above the floor.

Heated Towel Rails

Jersey Square 10 BAR

Product Code

MS10 | MS10 BLACK | MS10 BSS
MS10 GM | MS10 BRASS

Dimensions (mm)

620(w) x 1340(h) x 120(d)mm

Width Centres **590mm**

Vertical Centres **1140mm**



POLISHED
MS10

Finishes: Beautiful and highly durable
palette of exquisite finishes

(Polished Stainless/Black/Brushed Stainless/Brushed Gunmetal/Brushed Brass)



BLACK
ER10 BLACK



BRUSHED SS
ER10 BSS



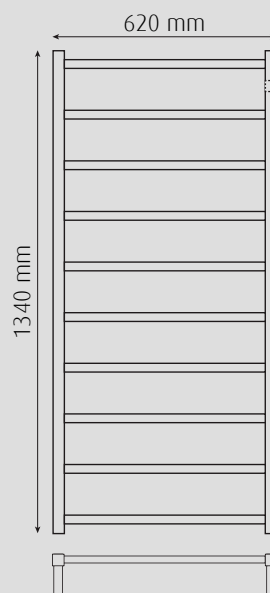
BRUSHED
GUNMETAL
ER10 GM



BRUSHED
BRASS
ER10 BRASS

Features

- 10 bars
- Dual wired-can connect from LH or RH bottom leg
- Concealed wiring kit included
- All fixing accessories included
- 110watts, 230-240 Volts, 50 Hz single phase
- Class 1 appliance - requires an earth connection
- Ingress Protection Rating - IP45
Splashproof



Notes : Wiring connection is either LH or RH bottom leg and can be a concealed or exposed connection. It should be positioned at least 600mm above the floor.