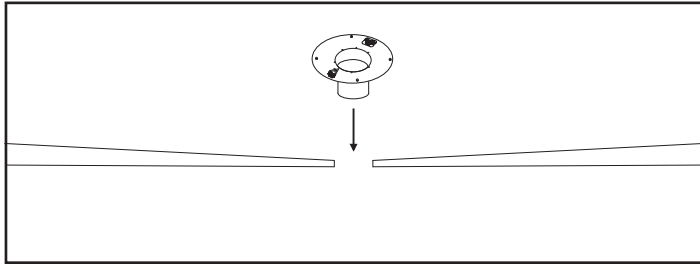
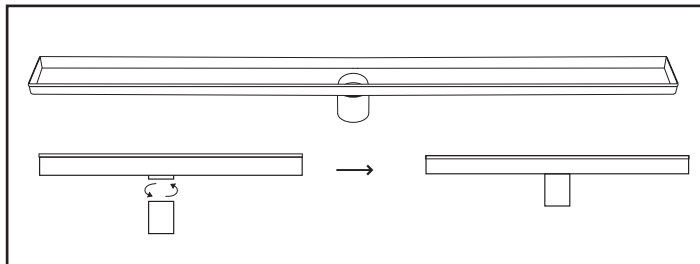


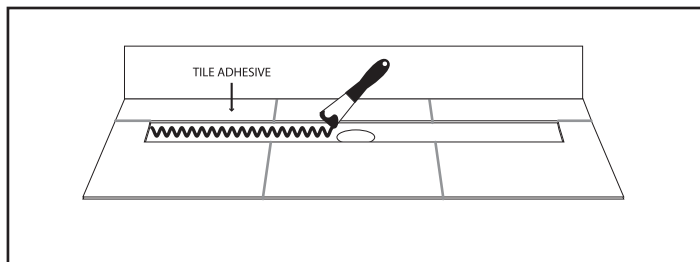
Channel Drain Installation Instructions



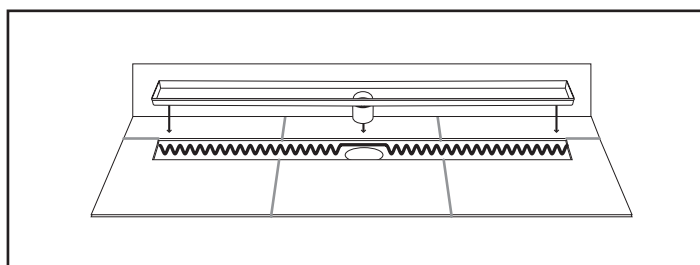
- 1 Ensure that an appropriate flange has been attached to the waste pipe in the floor.
- 2 Ensure that the shower floor and recess for the channel drain have been waterproofed upto and over the lip edge of the flange.



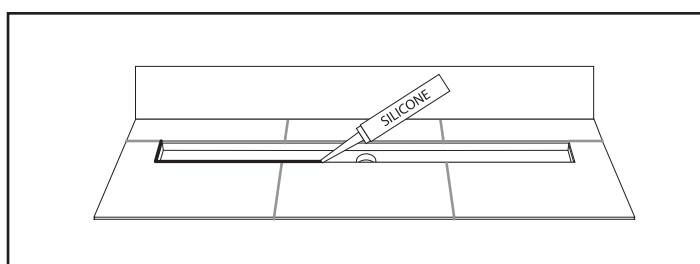
- 3 Attach a stainless steel spigot to the channel and lock in position.



- 4 Apply an appropriate amount of tile adhesive or silicon to the channel cut-out.

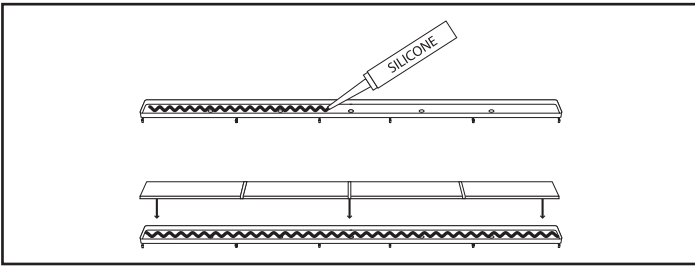


- 5 Lower the channel insert into the channel cut-out and allow to cure.

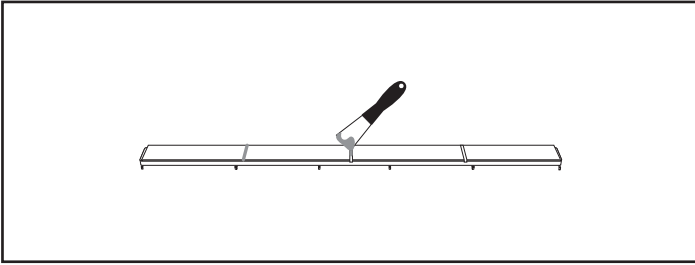


- 6 Seal around the perimeter of the channel insert (where the channel insert and tiles meet) with silicone sealant and allow to cure.
- 7 Place the grating of the channel into the trough.

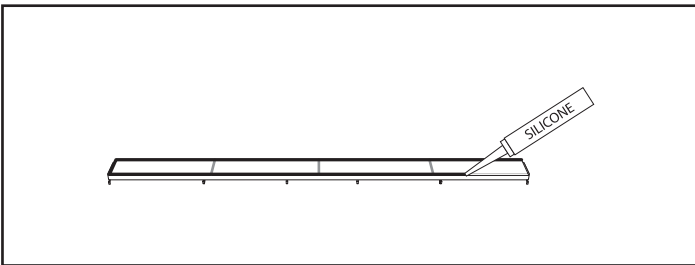
For Tile Insert Grating



- 1 Glue tiles into the tile insert using silicone and allow to cure.



- 2 Once the tiles have been glued in place, grout the tile joints and allow to cure.



- 3 Seal around the perimeter of the tile insert (where the tile insert and tiles meet) with silicone sealant and allow to cure.

For more information about the Tranquillity Bathroom Collection & our range of products visit www.tbw.co.nz